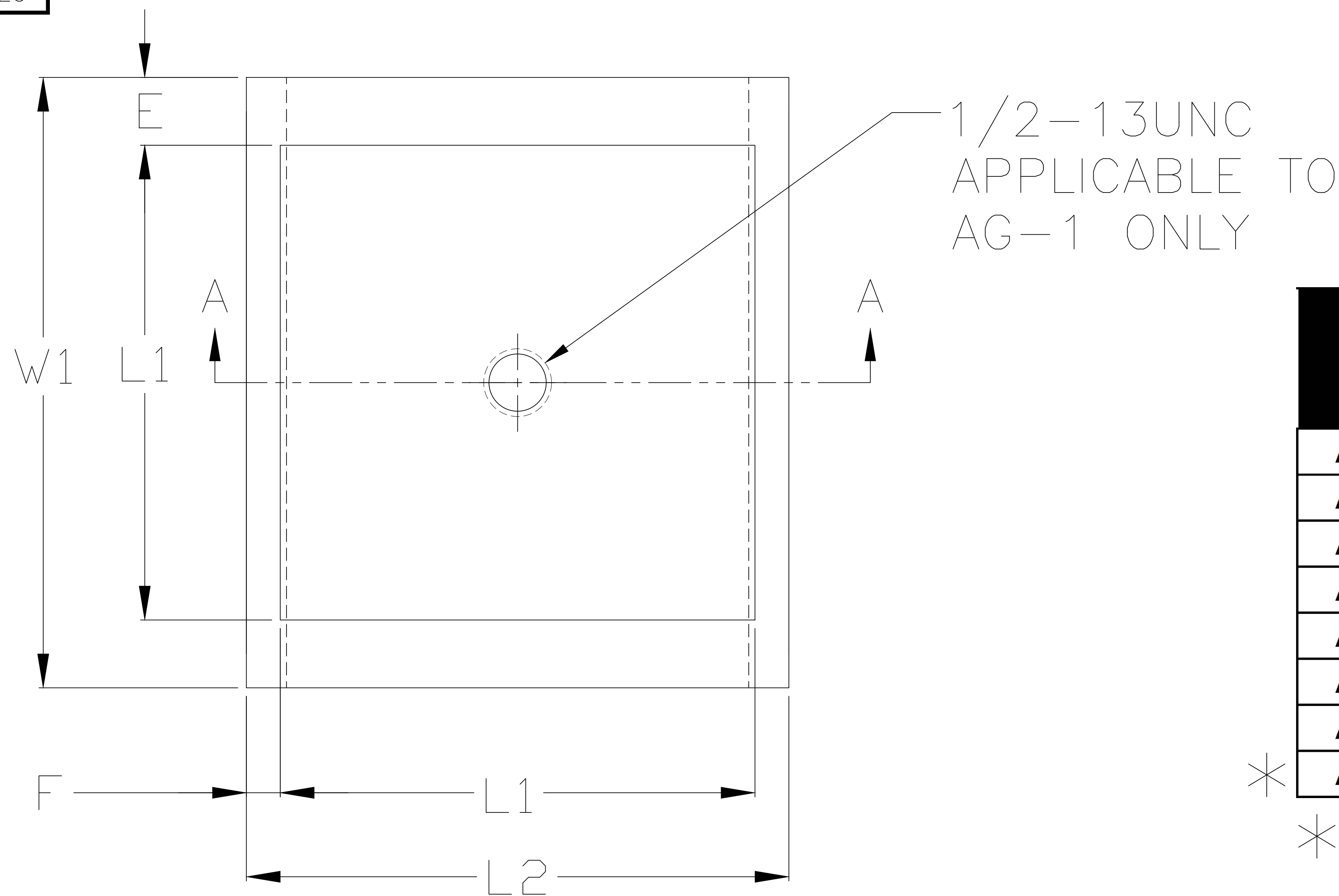
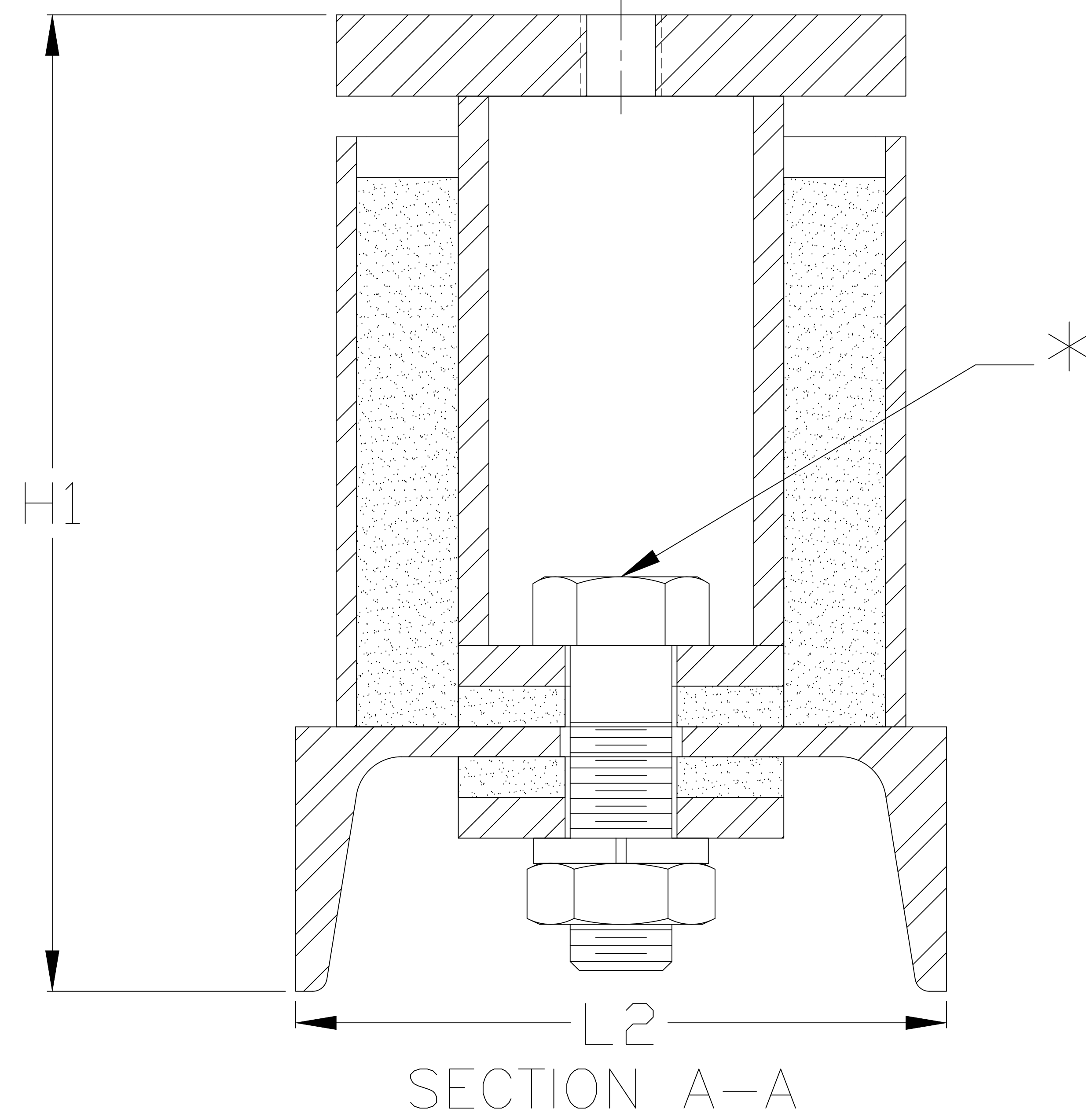


REV.	DESCRIPTION	DATE	BY



P/N:	MAX. LOAD RATINGS (LBS.)		DIMENSIONS (IN.)					
	VERT.	HORIZ.	W1	L1	L2	H1	E	F
<b>AG-1</b>	<b>1000</b>	<b>500</b>	<b>3</b>	<b>2-1/2</b>	<b>3</b>	<b>3-13/16</b>	<b>1/4</b>	<b>1/4</b>
<b>AG-2</b>	<b>1800</b>	<b>900</b>	<b>4 1/2</b>	<b>4</b>	<b>4</b>	<b>6</b>	<b>1/4</b>	<b>-</b>
<b>AG-3</b>	<b>3000</b>	<b>1500</b>	<b>5</b>	<b>4</b>	<b>5</b>	<b>6-7/8</b>	<b>1/2</b>	<b>1/2</b>
<b>AG-4</b>	<b>4200</b>	<b>2100</b>	<b>6</b>	<b>5</b>	<b>6</b>	<b>8</b>	<b>1/2</b>	<b>1/2</b>
<b>AG-5</b>	<b>7500</b>	<b>3750</b>	<b>7</b>	<b>6</b>	<b>7</b>	<b>9-15/32</b>	<b>1/2</b>	<b>1/2</b>
<b>AG-6</b>	<b>11800</b>	<b>5900</b>	<b>8</b>	<b>7</b>	<b>8</b>	<b>11</b>	<b>1/2</b>	<b>1/2</b>
<b>AG-7</b>	<b>17000</b>	<b>8500</b>	<b>9</b>	<b>8</b>	<b>9</b>	<b>12-7/16</b>	<b>1/2</b>	<b>1/2</b>
<b>AG-8</b>	<b>30700</b>	<b>15350</b>	<b>11</b>	<b>10</b>	<b>10</b>	<b>15-1/2</b>	<b>1/2</b>	<b>-</b>

\* ISOLATOR CONSIST OF (2X) BOLT ASSEMBLY.



**NOTES:**

- REFER TO PAGE 2 FOR MODEL AG ISOLATOR WITH BASE PLATE.

OTHER MATERIALS, COMPOUNDS, OR FINISHES WITH EQUAL OR SUPERIOR PROPERTIES MAY BE SUBSTITUTED AS THEY BECOME AVAILABLE.



**CERTIFIED FOR: CERT**

JOB NAME: \_\_\_\_\_

CUSTOMER: \_\_\_\_\_

CUSTOMER P.O.: \_\_\_\_\_

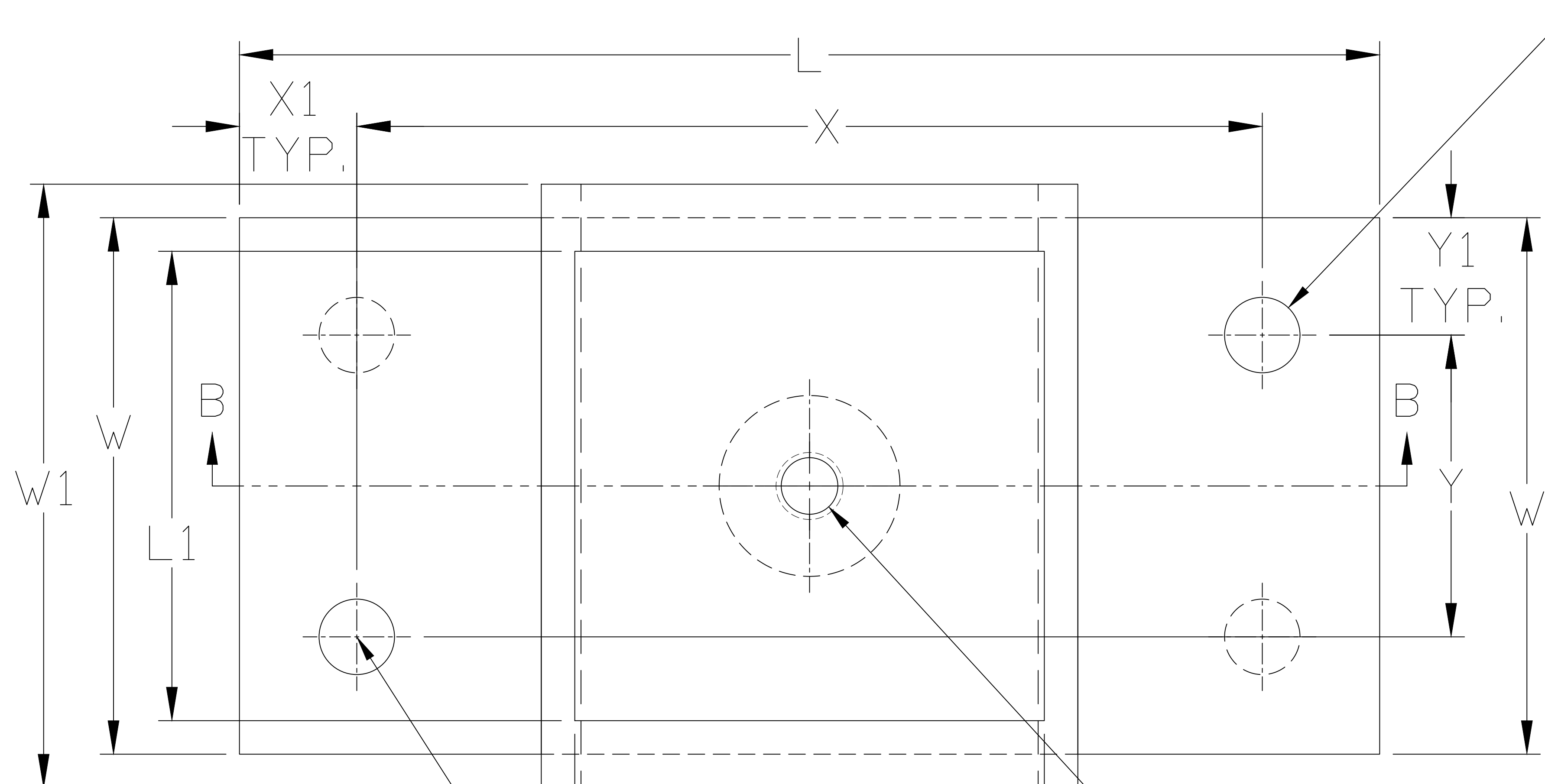
SALES ORDER: \_\_\_\_\_

**MODEL AG RESTRAINT FOR CONCRETE OR STEEL ATTACHMENT WITHOUT BASE PLATE**

**VMC GROUP**  
THE POWER OF TOGETHER  
Bloomingdale, NJ 07403  
Houston, TX 77041

SCALE:	NONE	
SHEET:	1 OF 2	
DRAWING NO.:		REVISION

REV.	DESCRIPTION	DATE	BY



(2 TYP.) EXTRA HOLES APPLICABLE ONLY TO AG-7 & AND AG-8

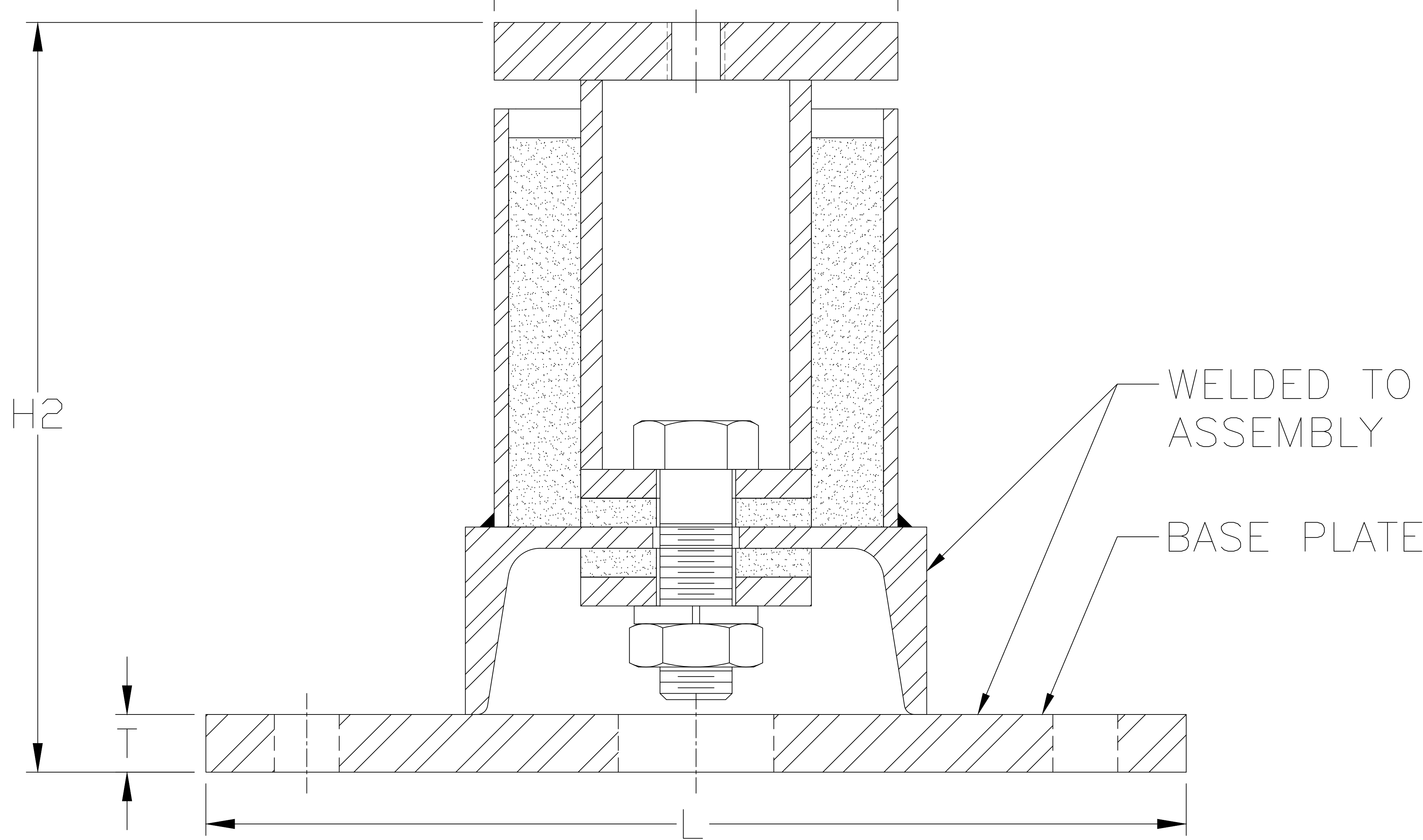
P/N WITH PLATE:	MAX. LOAD RATINGS (LBS.)		DIMENSIONS (IN.)										
	VERT.	HORIZ.	H2	L	L1	T	W	W1	X	X1	Y	Y1	ØA
<b>AG-1B</b>	<b>1000</b>	<b>500</b>	<b>4-1/16</b>	<b>6</b>	<b>2-1/2</b>	<b>1/4</b>	<b>3</b>	<b>3</b>	<b>4-1/4</b>	<b>7/8</b>	<b>1-1/4</b>	<b>7/8</b>	<b>5/8 (2X)</b>
<b>AG-2B</b>	<b>1800</b>	<b>900</b>	<b>6-1/2</b>	<b>8-1/2</b>	<b>4</b>	<b>1/2</b>	<b>4</b>	<b>4-1/2</b>	<b>6-3/4</b>	<b>7/8</b>	<b>2-1/4</b>	<b>7/8</b>	<b>9/16 (2X)</b>
<b>AG-3B</b>	<b>3000</b>	<b>1500</b>	<b>7-3/8</b>	<b>9</b>	<b>4</b>	<b>1/2</b>	<b>4</b>	<b>5</b>	<b>7-1/4</b>	<b>7/8</b>	<b>2-1/4</b>	<b>7/8</b>	<b>9/16 (2X)</b>
<b>AG-4B</b>	<b>4200</b>	<b>2100</b>	<b>8-1/2</b>	<b>10</b>	<b>5</b>	<b>1/2</b>	<b>6</b>	<b>6</b>	<b>8-1/4</b>	<b>7/8</b>	<b>4-1/4</b>	<b>7/8</b>	<b>9/16 (2X)</b>
<b>AG-5B</b>	<b>7500</b>	<b>3750</b>	<b>10-3/32</b>	<b>11</b>	<b>6</b>	<b>5/8</b>	<b>7</b>	<b>7</b>	<b>9-1/4</b>	<b>7/8</b>	<b>5-1/4</b>	<b>7/8</b>	<b>9/16 (2X)</b>
<b>AG-6B</b>	<b>11800</b>	<b>5900</b>	<b>11-3/4</b>	<b>12-1/2</b>	<b>7</b>	<b>3/4</b>	<b>8</b>	<b>8</b>	<b>10-1/4</b>	<b>1-1/8</b>	<b>5-3/4</b>	<b>1-1/8</b>	<b>11/16 (2X)</b>
<b>AG-7B</b>	<b>17000</b>	<b>8500</b>	<b>13-3/16</b>	<b>13-1/2</b>	<b>8</b>	<b>3/4</b>	<b>9</b>	<b>9</b>	<b>11-1/4</b>	<b>1-1/8</b>	<b>6-3/4</b>	<b>1-1/8</b>	<b>11/16 (4X)</b>
<b>AG-8B</b>	<b>30700</b>	<b>15350</b>	<b>16-1/2</b>	<b>16</b>	<b>10</b>	<b>1</b>	<b>15</b>	<b>11</b>	<b>13-1/2</b>	<b>1-1/4</b>	<b>12-1/2</b>	<b>1-1/4</b>	<b>13/16 (4X)</b>

ØA  
 (2X)AG-1B - AG-8B  
 (4X)AG-7B - AG-8B

1/2-13UNC APPLICABLE TO AG-1B ONLY

**NOTES:**

- REFER TO PAGE 1 FOR MODEL AG ISOLATOR WITHOUT BASE PLATE.



SECTION B-B

**NOTES:**  
 1. ANCHOR OR BOLTING SIZE BY OTHERS.

OTHER MATERIALS, COMPOUNDS, OR FINISHES WITH EQUAL OR SUPERIOR PROPERTIES MAY BE SUBSTITUTED AS THEY BECOME AVAILABLE.



**CERTIFIED FOR: CERT**

JOB NAME: \_\_\_\_\_

CUSTOMER: \_\_\_\_\_

CUSTOMER P.O.: \_\_\_\_\_

SALES ORDER: \_\_\_\_\_

**MODEL AG-[ ]B RESTRAINT WITH BASE PLATE FOR CONCRETE OR STEEL ATTACHMENT**

**VMC GROUP**  
 THE POWER OF TOGETHER  
 Bloomingdale, NJ 07403  
 Houston, TX 77041

SCALE:	NONE	
SHEET:	2 OF 2	
DRAWING NO.:		REVISION